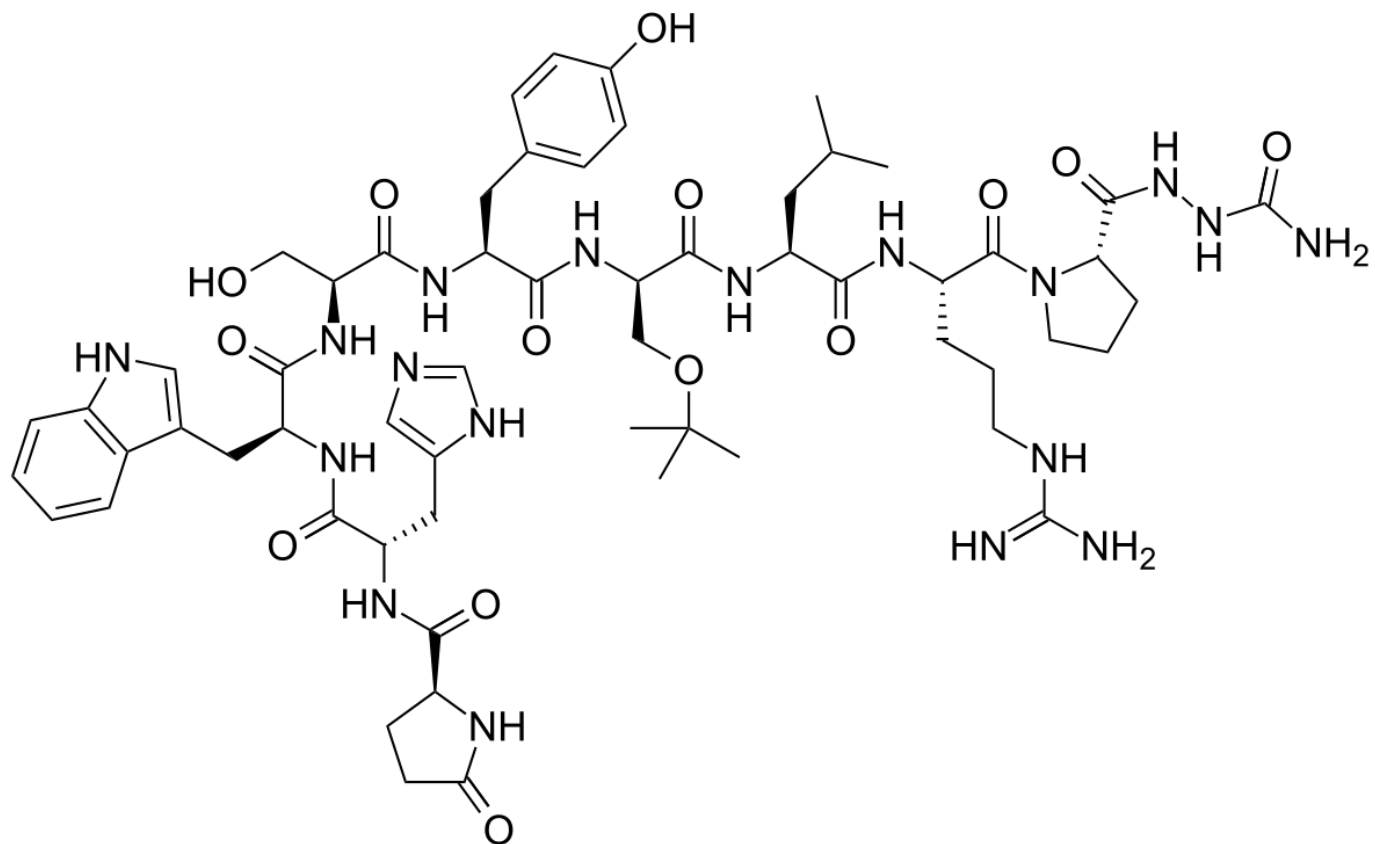


Goserelin

Printed from <https://www.cancerquest.org/node/6451> on 10/19/2021



Brand name: Zoladex®

IUPAC: (2S)-N-[(2S)-1-[[[(2S)-1-[[[(2S)-1-[[[(2S)-1-[[[(2S)-1-[[[(2S)-1-[[[(2S)-1-[[[(2R)-1-[[[(2S)-1-[[[(2S)-2-[[[(carbamoylamino)carbamoyl]pyrrolidin-1-yl]-5-(diaminomethylideneamino)-1-oxopentan-2-yl]amino]-4-methyl-1-oxopentan-2-yl]amino]-3-[(2-methylpropan-2-yl)oxy]-1-oxopropan-2-yl]amino]-3-(4-hydroxyphenyl)-1-oxopropan-2-yl]amino]-3-hydroxy-1-oxopropan-2-yl]amino]-3-(1H-indol-3-yl)-1-oxopropan-2-yl]amino]-3-(1H-imidazol-5-yl)-1-oxopropan-2-yl]-5-oxopyrrolidine-2-carboxamide

FDA approval: Yes

[Enlace del fabricante](#)

Usage:

Zoladex (goserelin) is a man-made form of a hormone that regulates many processes in the body. Goserelin overstimulates the body's own production of certain hormones, which causes that production to shut down temporarily. Zoladex is used in men to treat symptoms of prostate cancer. Zoladex is used in women to treat breast cancer or endometriosis. Goserelin is also used in women to prepare the lining of the uterus for endometrial ablation (a surgery to correct abnormal uterine bleeding).

Mechanism:

ZOLADEX is a synthetic decapeptide analogue of GnRH. ZOLADEX acts as an inhibitor of pituitary gonadotropin secretion when administered in the biodegradable formulation. In animal and in vitro studies, administration of goserelin resulted in the regression or inhibition of growth of the hormonally sensitive dimethylbenzanthracene (DMBA)-induced rat mammary tumor and Dunning R3327 prostate tumor.

Side effects:

Side effects of Zoladex include: mood swings, hot flashes, loss of libido, vaginal dryness, breast swelling or tenderness, weight gain, headaches, and bone pain.