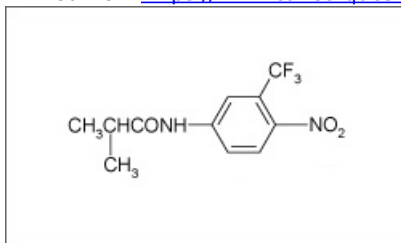


Flutamide

Printed from <https://www.cancerquest.org/patients/drug-reference/flutamide> on 12/03/2022



Brand name: Eulexin®

IUPAC: 2-methyl-N-[4-nitro-3-(trifluoromethyl)phenyl]propanamide

FDA approval: Yes

[Manufacturer Link](#)

Usage:

Flutamide is used to treat prostate cancer in various stages. This drug is given in conjunction with other drugs such as goserelin acetate. Flutamide is taken in capsule form usually several times a day.^[1]

¹ Chu, E., & DeVita, V. T. (2015). Physicians' cancerchemotherapy drug manual 2015. Burlington, MA: Jones & Bartlett Learning.

Mechanism:

Flutamide (Eulexin®) is an anti-androgenic molecule that blocks the effects of androgens (sex hormones), such as testosterone, in the body by preventing its entry into cells or its binding to necessary receptors in the cell nuclei. In certain tissues androgens control the growth and division of cells, normal and cancerous. Flutamide is used in the treatment of prostate cancers, which are dependent on testosterone for growth control. By blocking the growth enhancing activities of testosterone in cancerous cells treatment with flutamide can result in a decrease in tumor size or a delay in tumor growth.^[1]

The 3D molecular structure below shows the conformer Flutamide.

¹ Chu, E., & DeVita, V. T. (2015). Physicians' cancerchemotherapy drug manual 2015. Burlington, MA: Jones & Bartlett Learning.

Side effects:

Common side effects include, breast swelling or soreness, diarrhea and cramping Decreased energy, hot flashes. Side effects may differ from those listed above if flutamide is being taken with other medications. Though very rare, there is a chance that liver toxicity can occur during treatment with flutamide. This condition is reversible, but liver function should be monitored with blood tests throughout the duration of treatment.^[1]

¹ Chu, E., & DeVita, V. T. (2015). Physicians' cancerchemotherapy drug manual 2015. Burlington, MA: Jones & Bartlett Learning.